

Franklyn James



24 Marsh Wall,

, London, E14 9EG

Asking Price £695,000

This stunning two bedroom apartment is desirably located on the thirty-fourth floor in the Landmark East Tower and offers panoramic views towards The City and Canary Wharf.

The property comprises dual-aspect open-plan reception room/kitchen with sliding door to private balcony and floor to ceiling windows, master bedroom with fitted wardrobes and stylish en-suite shower room, second generous double bedroom, luxurious bathroom and ample storage throughout. The apartment has been furnished to a high standard. The Landmark development also features a 24 hour concierge and residents gym, and is within moments of Canary Wharf station and Heron Quay DLR.

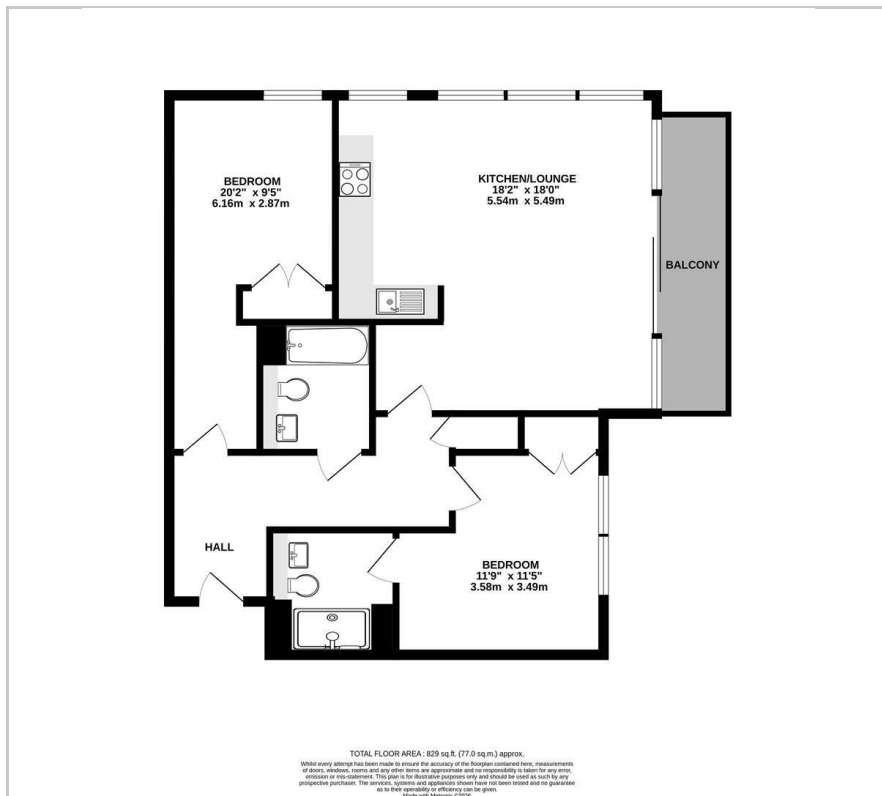
- Located on the 34th floor
- Dual aspect views
- Two bedrooms and two bathrooms
- Private balcony
- 24 hour concierge
- Resident's gym
- Walking distance to Canary Wharf
- Close to amenities and shopping

Viewing

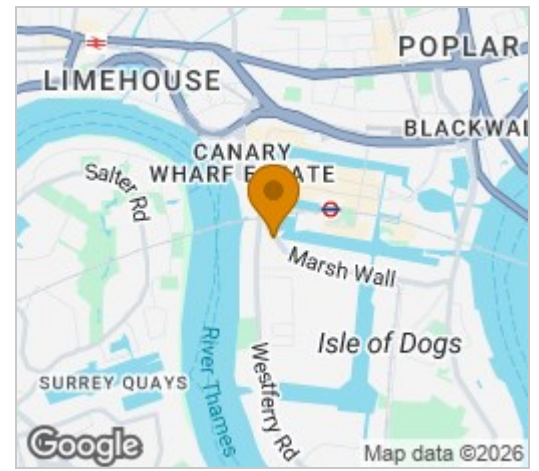
Please contact our Limehouse Sales Office on 02077911777 if you wish to arrange a viewing appointment for this property or require further information.



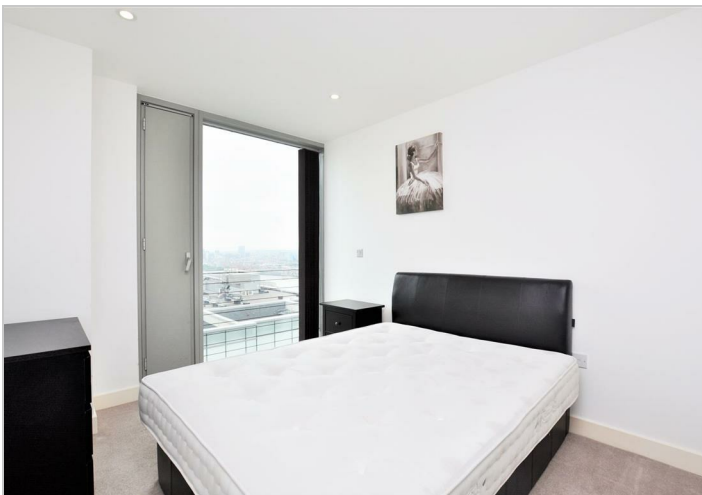
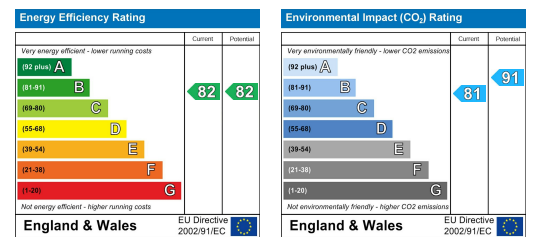
Floor Plan



Area Map



Energy Efficiency Graph



These particulars, whilst believed to be accurate are set out as a general outline only for guidance and do not constitute any part of an offer or contract. Intending purchasers should not rely on them as statements of representation of fact, but must satisfy themselves by inspection or otherwise as to their accuracy. No person in this firm's employment has the authority to make or give any representation or warranty in respect of the property.